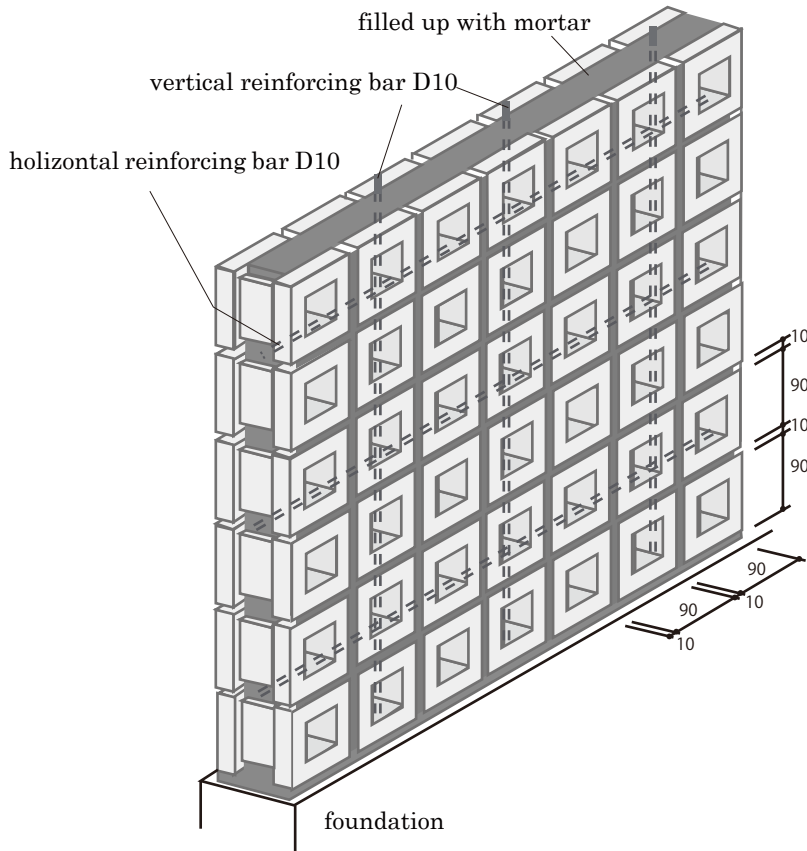


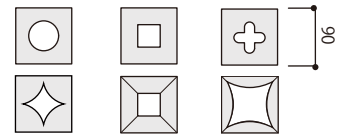
# DECORATIVE MODERN PRODUCTS : How to install and some important points

\* Here are some information for your reference for installation. Please judge by the situation of each site.

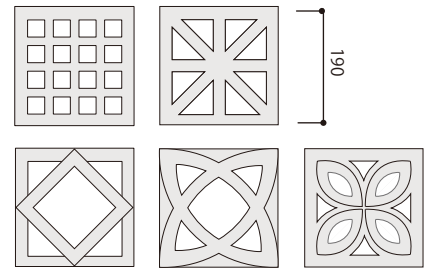


reference drawing : Porous block100

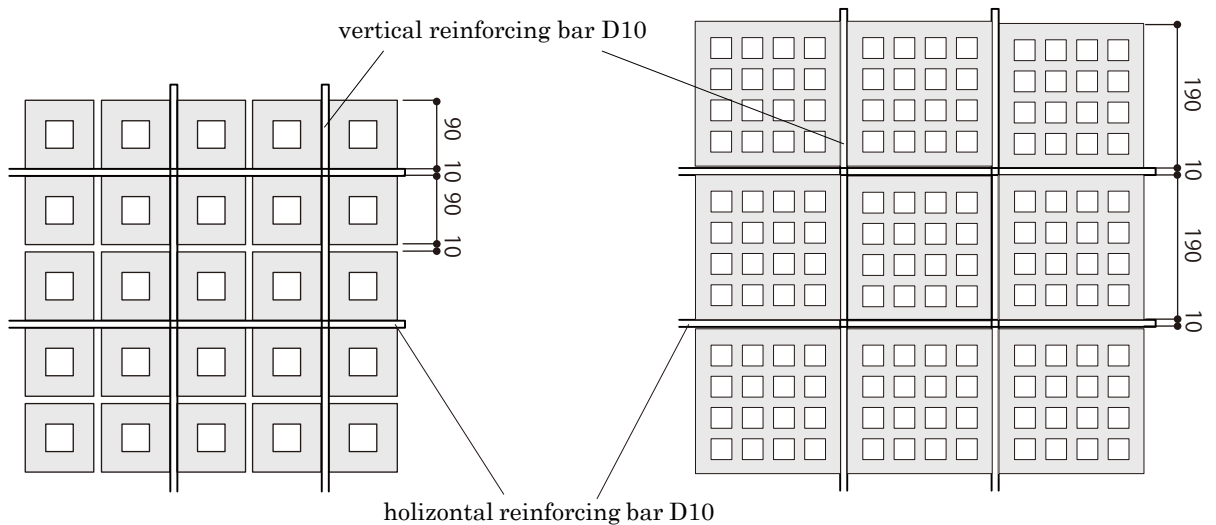
## Porous block100



## Porous block200



- Place the reinforcing bar at every 200mm pitch for both vertical and horizontal directions
- Because of roughened surface of the products, do not apply grouting with the grout float. Please apply and finish with the grout pointing trowels.
- For applying grout, please take a proper curing period after piling on the blocks
- Please pay attention not to stick mortar on the product's surface.  
It is hard to clean it up completely.
- The recommended installation height is up to 1,200mm under this installation method.
- In the case to plan the blocks piling on higher position, please take an another measurement in addition to the reinforcing bars in order to strengthen the structure.
- This ceramic product has individual differences in size, shape, and colors.



### SAFETY INSTRUCTIONS

- Keep the tiles out of the rain
- Do not attempt to install on the bad weather
- Do not install tiles when it is under 5 degrees Celsius.